

**[EPUB] ☆ Glazes Cone 6: 1240
C / 2264 F (Ceramics
Handbooks) ☆ Michael Bailey –
Soccerjerseys-wholesale.co**

NEW POST

RECENT POST

Posted on 06 February 2019 By Michael Bailey

Traditionally Potters Fired Their Work Either At Low Temperatures, As For Earthenware, Or At The High Temperature That Stoneware Requires However, A Growing Number Of Potters, Particularly Those Who Use Electric Kilns, Are Firing To A Middle Range Temperature, Of Which Conels Typical Using Middle Range Temperatures Saves Fuel And Expense, Reduces Wear On Electric Elements, And Yet Allows The Potter To Achieve Features Shared By Earthenware And Stoneware Because Of The Popularity Of This Technique, Pottery Suppliers Have Recently Begun Developing Clay Bodies And Glazes Suitable For The Temperature Rangeln Glazes ConeMike Bailey Surveys The Growing Trend In Middle Temperature Firing And Guides The Reader By Practical Knowledge He Discusses A Range Of Different Glazes, Including Special Effects, Glaze Stains, And Underglaze Colors, Giving Both Recipes And Tips For Ensuring Success

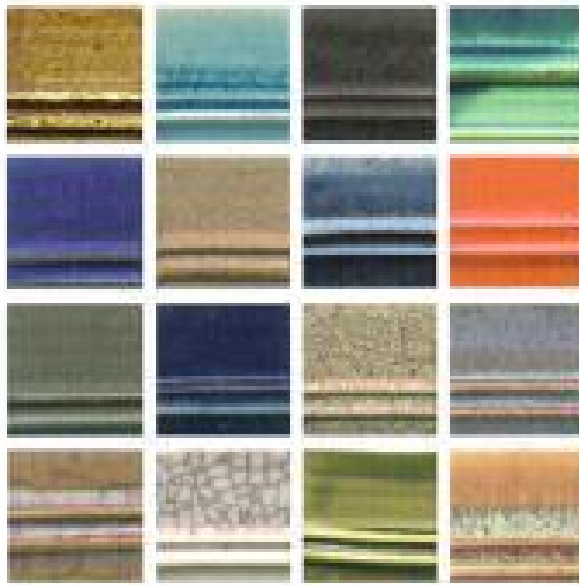
CERAMICS HANDBOOKS · CERAMICS HANDBOOKS

CERAMICS HANDBOOKS · CERAMICS HANDBOOKS · CERAMICS HANDBOOKS · CERAMICS HANDBOOKS

GLAZES

CONE 6

1240° C/2264° F



CERAMICS HANDBOOKS · CERAMICS HANDBOOKS · CERAMICS HANDBOOKS · CERAMICS HANDBOOKS

CERAMICS HANDBOOKS · CERAMICS HANDBOOKS

MICHAEL BAILEY